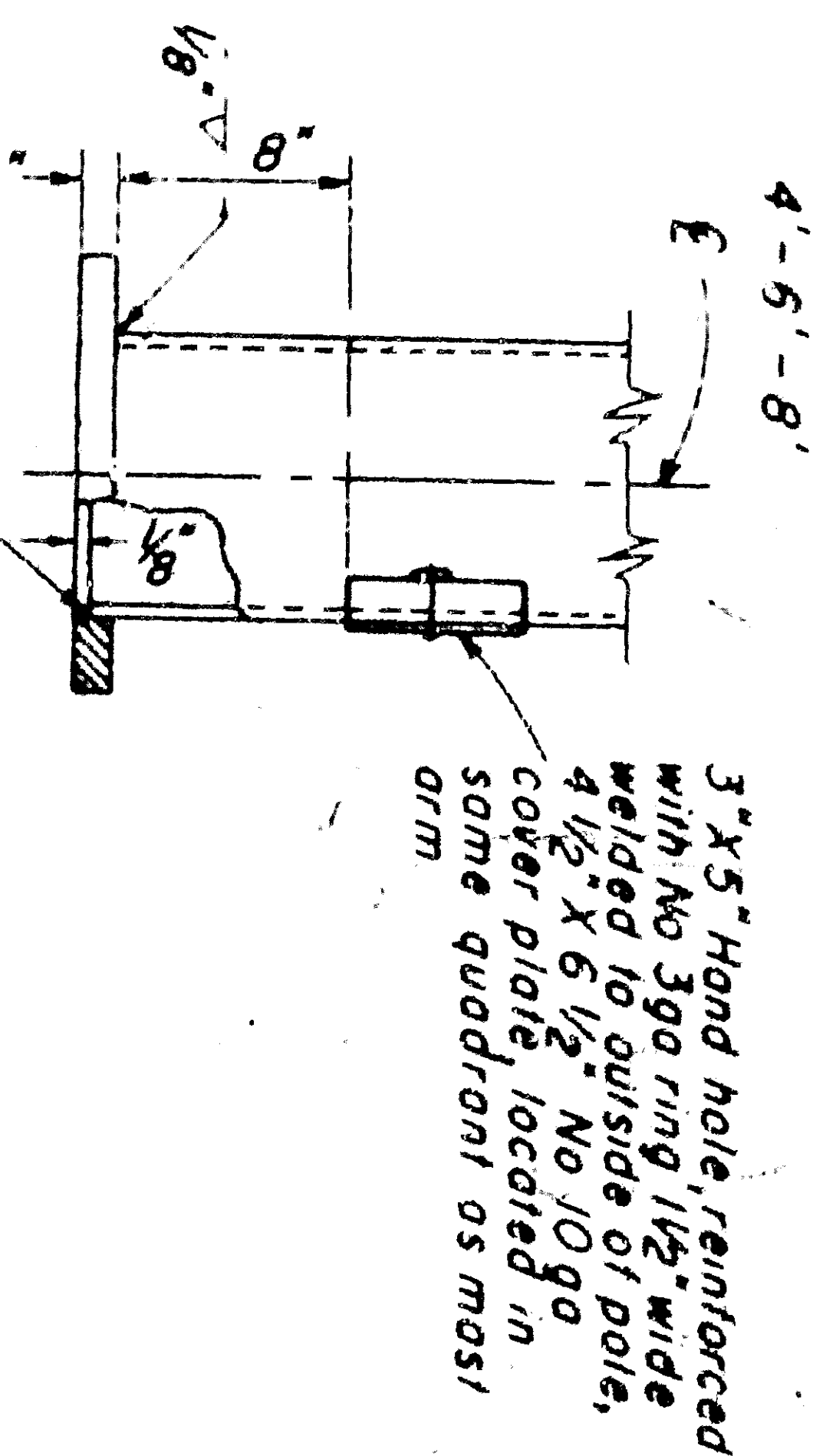


POLE TYPE	POLE WEIGHT & GAUGE	POLE BASE DIAMETER	BASE PLATE DIMENSIONS	BASE PLATE SLOT SIZE	ANCHOR BOLT DIMENSIONS	ANCHOR BOLT DIAMETER
II	20' x 10ga	6 3/4"	11 1/2" x 9 1/2" x 1/4"	1 1/2"	1" x 36"	3/2"
II-a	25' x 10ga	7 3/8"	11 1/2" x 9 1/2" x 1/4"	1 1/2"	1" x 36"	3/2"
III	30' x 7ga	8"	11 1/2" x 9 1/2" x 1/4"	1 1/2"	1 1/2" x 40"	1 1/2"
III-a	35' x 7ga	8 1/2"	11 1/2" x 9 1/2" x 1/4"	1 1/2"	1 1/2" x 44"	1 1/2"
IV	30' x 10ga	8"	11 1/2" x 9 1/2" x 1/4"	1 1/2"	1" x 36"	1 1/2"
IV-a	35' x 10ga	8 1/2"	11 1/2" x 9 1/2" x 1/4"	1 1/2"	1" x 36"	1 1/2"

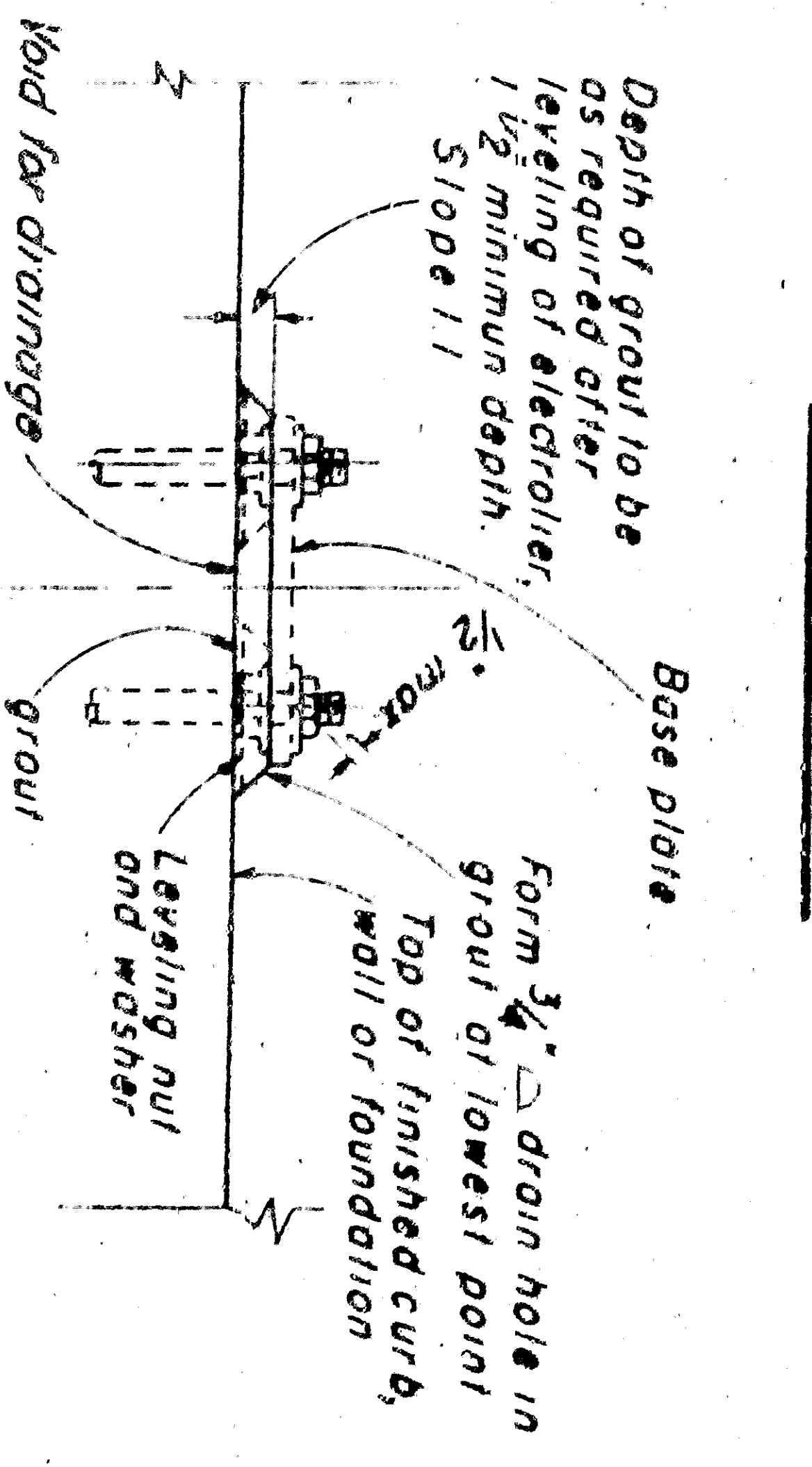
Note: 11 gauge acceptable if fabricated from steel steel of 40,000 psi minimum yield.

**BASE AND ANCHOR BOLT SCHEDULE**

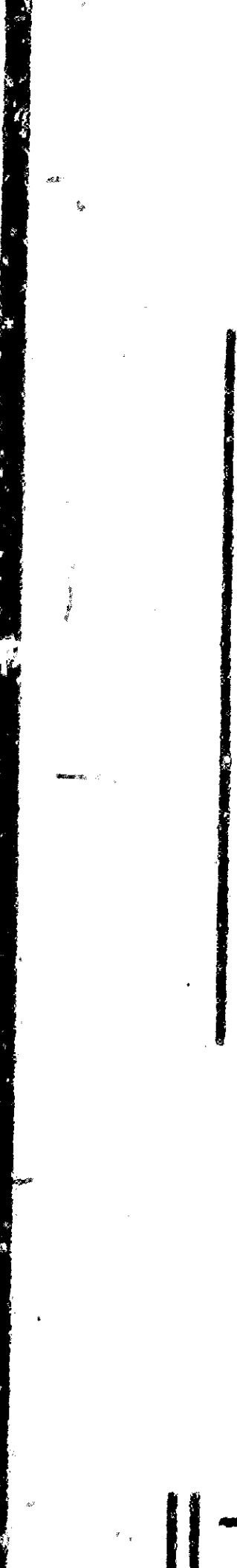
**MAST ARM**



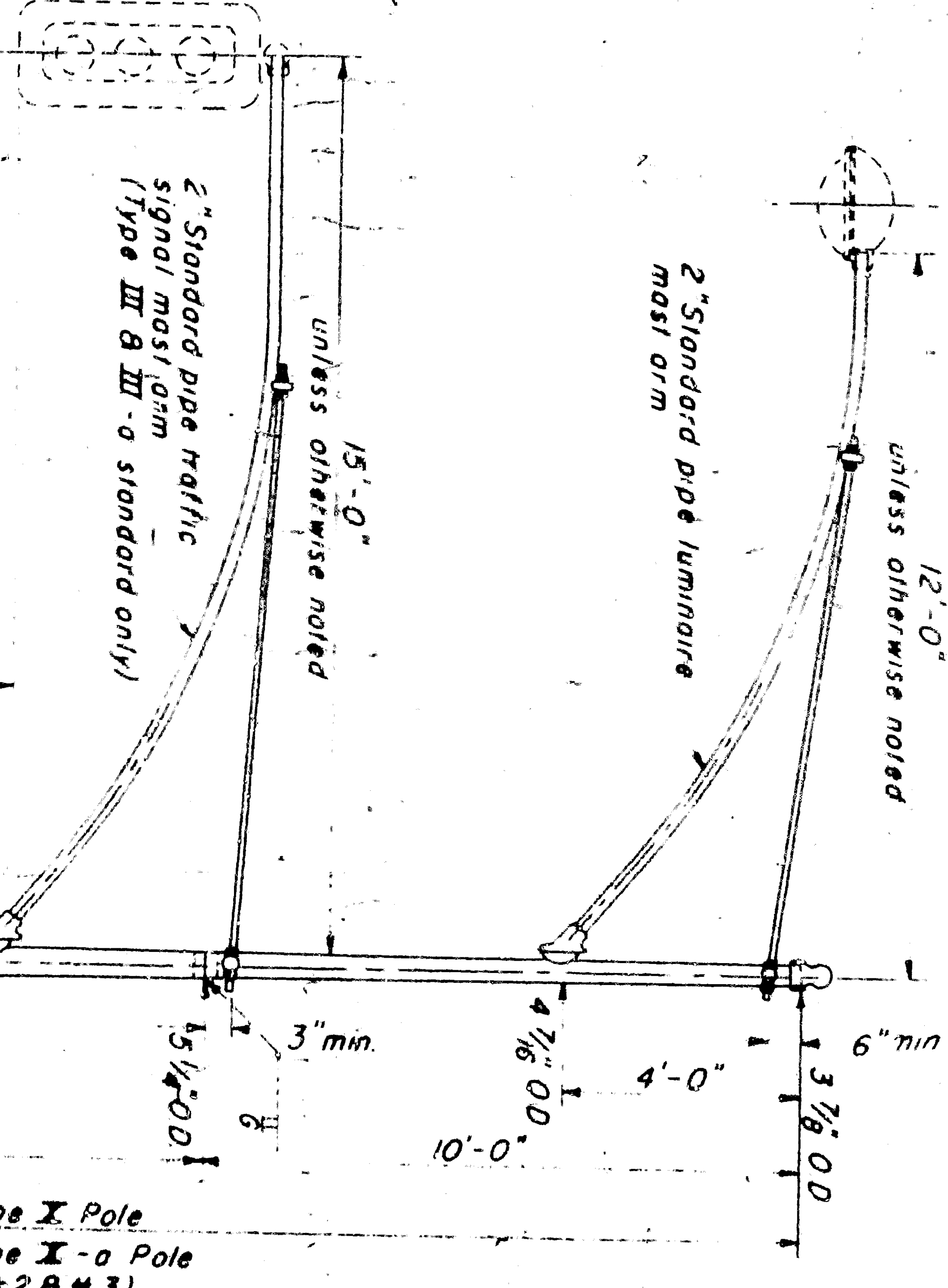
**POLE BASE**



**GROUT DETAIL**



3" x 5" Hand hole fabricated with no 3/8" ring 1/2" wide, welded to outside of pole, 4 1/2" x 6 1/2" No 10 ga cover plate located in arm quadrant (35 mast)

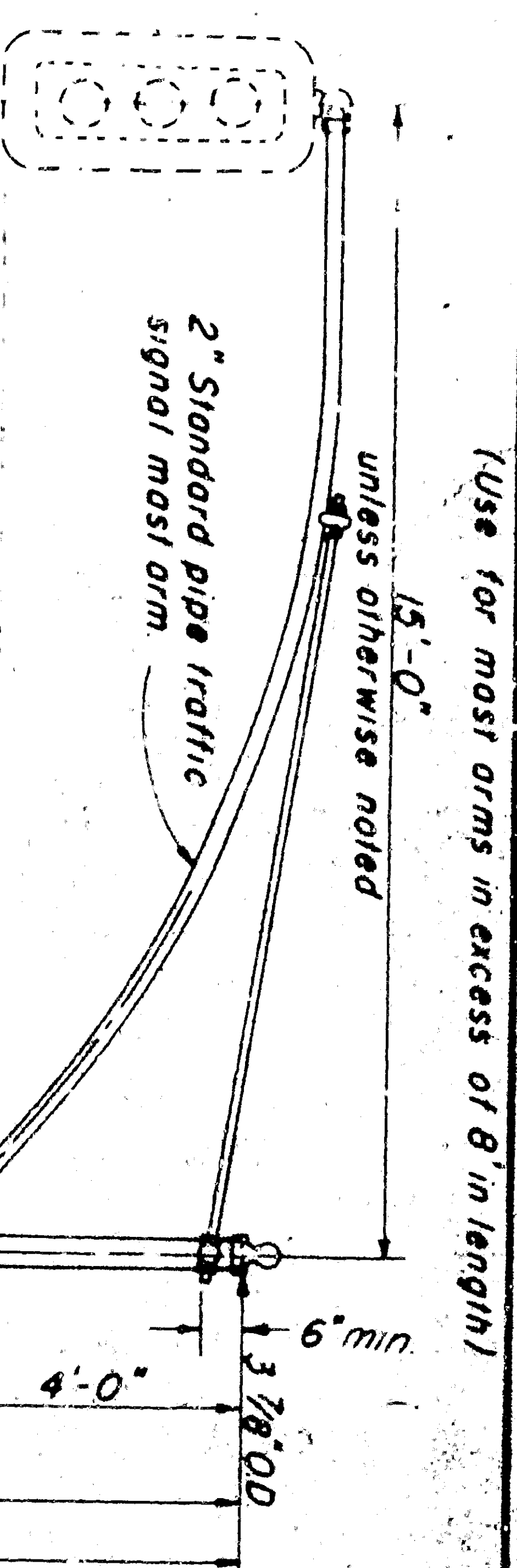


NOTE: Only lower mast arm from Type I & I-a poles

**TYPE III & III-a OR TYPE X & X-a**

ELEVATION  
(TYPE III SHOWN)  
SCALE: 3/8" = 1'-0"

**MAST ARM TIE RODS AND CROSS ARM**

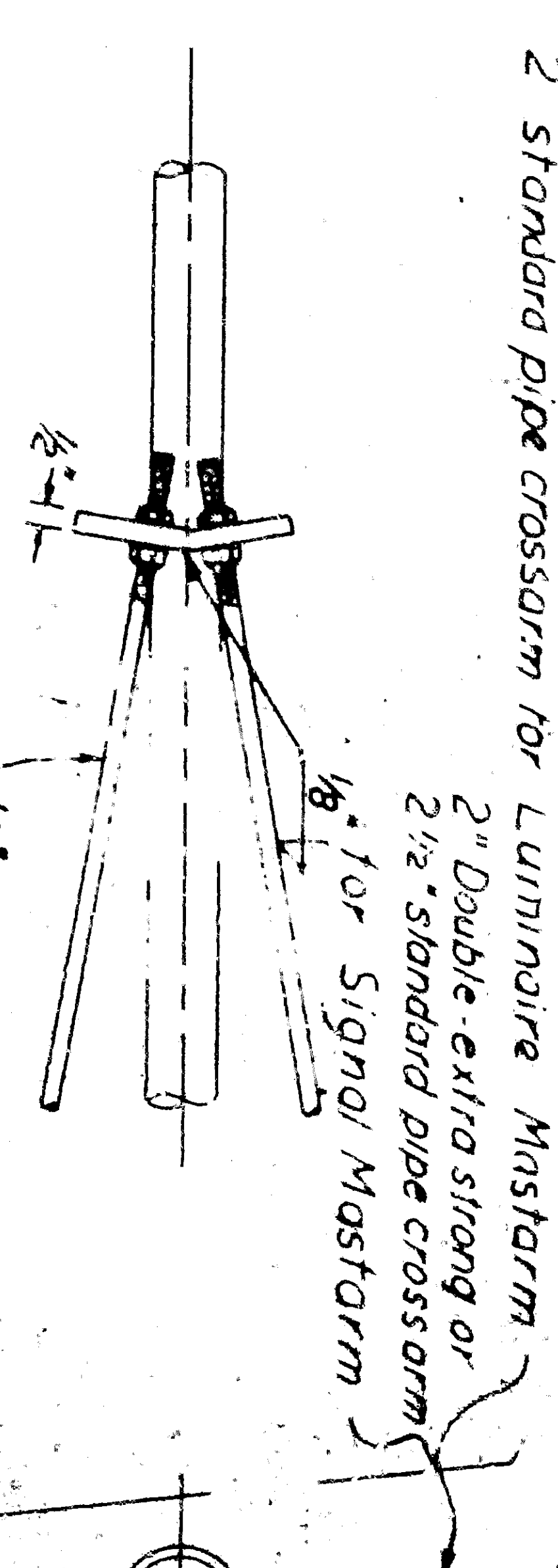


NOTE: Use for mast arms in excess of 8' in length

**TYPE II & II-a**

ELEVATION  
(TYPE II SHOWN)  
SCALE: 3/8" = 1'-0"

Aim drilled and dipped or use tapered washers to permit straight tie rods



**POLE SPLICE**

**CALIF - TYPE STANDARDS**

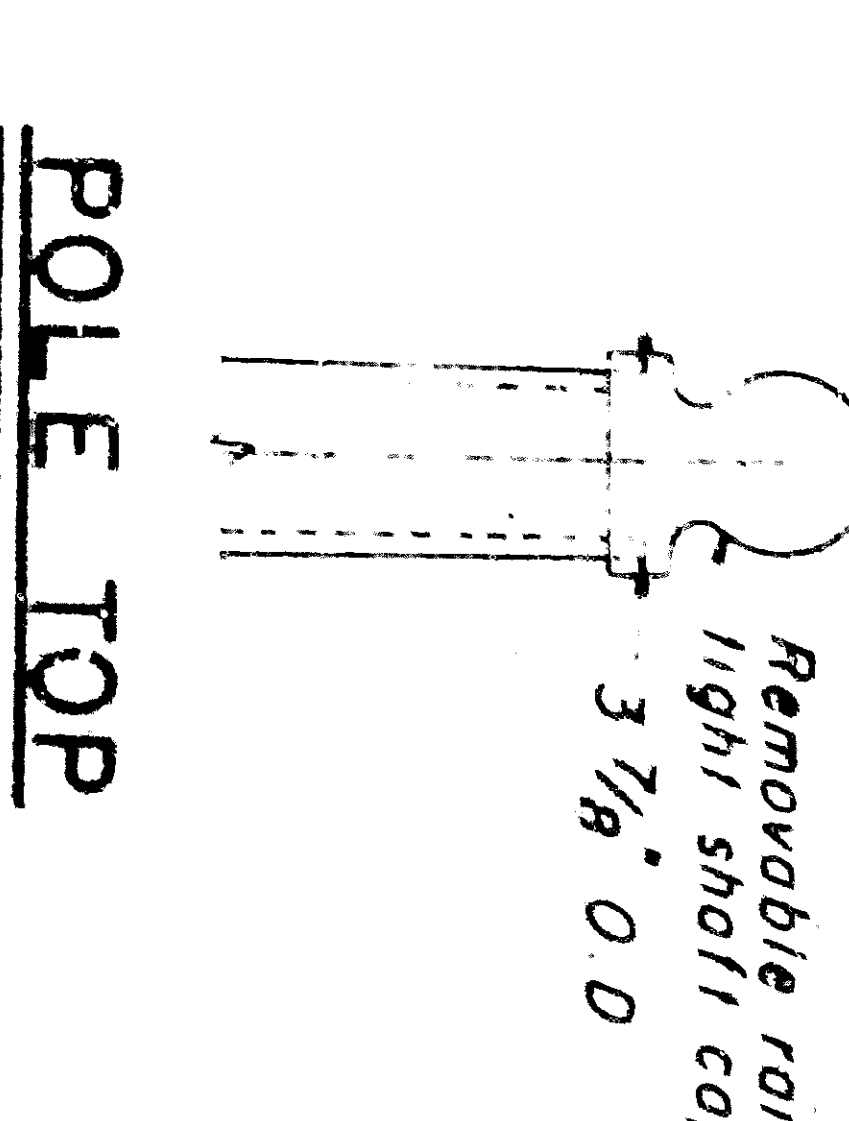
**GENERAL AND INSTALLATION NOTES**

1. All standards and mast arms shall be galvanized. All tie rods, nuts, washers and the rods shall be galvanized or cadmium plated.
  2. The lower 5' length of a 25' Type III-a pole shall consist of a 5' x 1/2" gauge tapered section (8'-0" to 8'-10" O.D.) butt welded to the lower end of a 30' Type III pole.
  3. The lower 5' length of a 25' Type II-a pole shall consist of a 5' x 1/2" gauge tapered section (8'-0" to 8'-10" O.D.) butt welded to the lower end of a 20' Type II pole.
  4. The lower 5' length of a 25' Type II-a pole shall consist of a 5' x 1/2" gauge tapered section (8'-0" to 8'-10" O.D.) butt welded to the lower end of a 20' Type II pole.
- MAST ARMS**
1. Luminaire mast arms shall be so curved that mast arms fastened to pole line luminaire pole shall not be below top of pole or more than 1'-6" above.
  2. The last 3' of the mast arm shall be straight and shall be horizontal with luminaire or traffic signal attached.
  3. Connection between mast arm and pole shall be made by means of a grommet, steel, of a design permitting simple removal of the mast arm and replacing a changed luminaire or signal.
- ANCHOR BOLTS**
1. Each standard shall be supplied with 4 anchor bolts.
  2. Each anchor bolt shall be provided with 6" of thread and shall be furnished with two nuts and washers. Washers shall be 5/16" x 2 1/2" O.D.
  3. Threaded nuts, cut or rolled, bolts shall be galvanized or plated after threads are formed.

STATE OF CALIFORNIA  
DEPARTMENT OF HIGHWAYS  
DIVISION OF HIGHWAYS

**STANDARDS**  
CALIFORNIA TYPE  
2011, 251, 301, 351, 401, 451 Heights

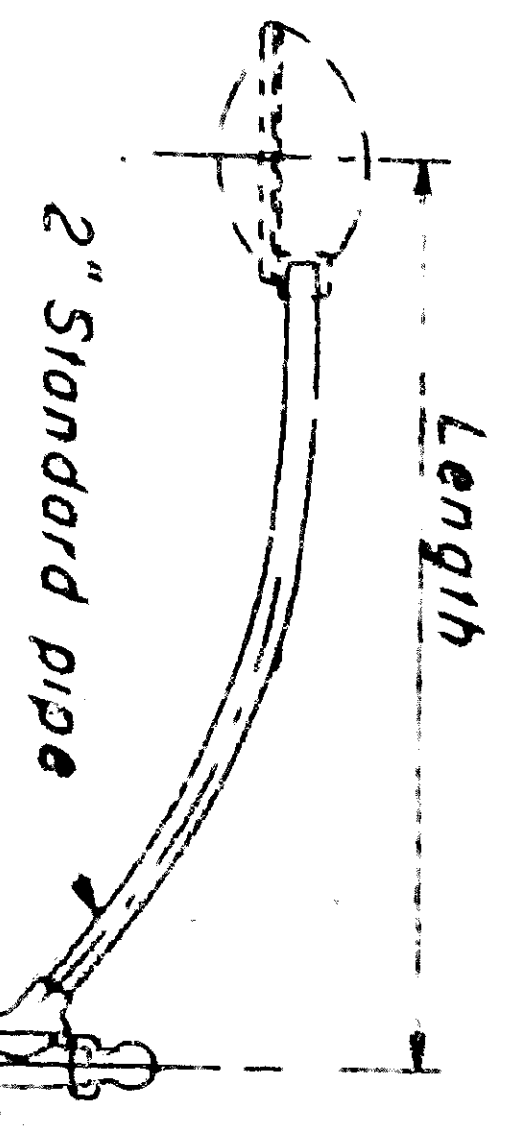
SCALE AS NOTED



POLE TYPE	POLE WEIGHT & GAUGE	POLE BASE DIAMETER	BASE PLATE DIMENSIONS	BASE PLATE SLOT SIZE	ANCHOR DIMENSIONS	BOLTS DIAMETER
II	20' x 10ga	6 3/4"	11 1/2" x 9 1/2" x 1/4"	1 1/4"	1' x 3 1/2"	3/4"
II-a	25' x 10ga	7 3/8"	11 1/2" x 9 1/2" x 1/4"	1 1/4"	1' x 3 1/2"	3/4"
III	30' x 7ga	8"	11 1/2" x 9 1/2" x 1/4"	1 1/4"	1 1/4' x 4 1/2"	1"
III-a	35' x 7ga	8 1/2"	11 1/2" x 9 1/2" x 1/4"	1 1/4"	1 1/4' x 4 1/2"	1 1/4"
IV	30' x 10ga	8"	11 1/2" x 9 1/2" x 1/4"	1 1/4"	1' x 3 1/2"	3/4"
IV-a	35' x 10ga	8 1/2"	11 1/2" x 9 1/2" x 1/4"	1 1/4"	1' x 3 1/2"	3/4"

Note: 11 gauge acceptable if fabricated from steel steel of 40,000 psi minimum yield.

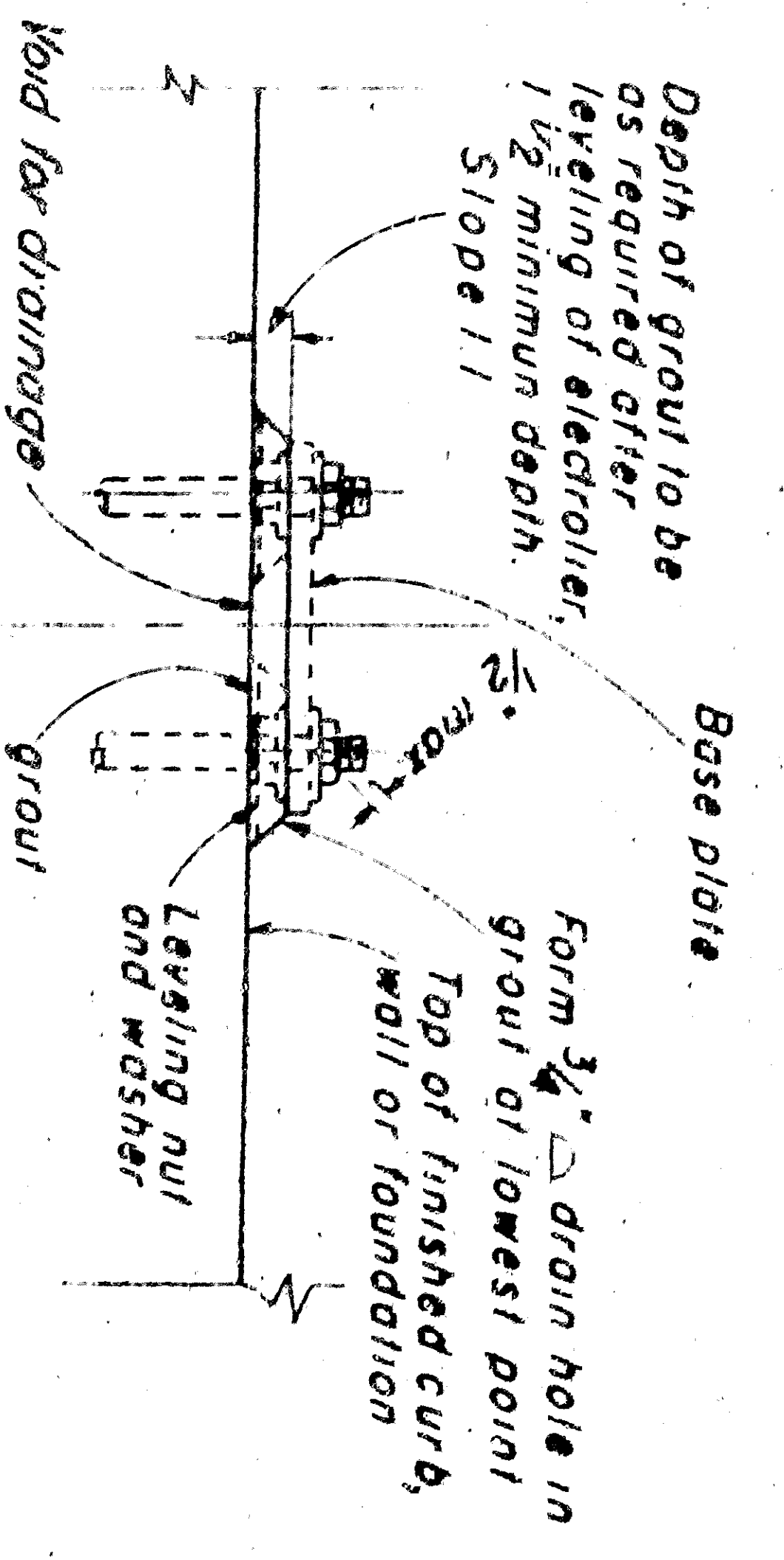
**BASE AND ANCHOR BOLT SCHEDULE**



**MAST ARM**

3" x 5" Hand hole fabricated with no 3/8" ring 1/2" wide, welded to outside of pole, 4 1/2" x 6 1/2" No. 10 ga. cover plate, located in arm quadrant (35 mast)

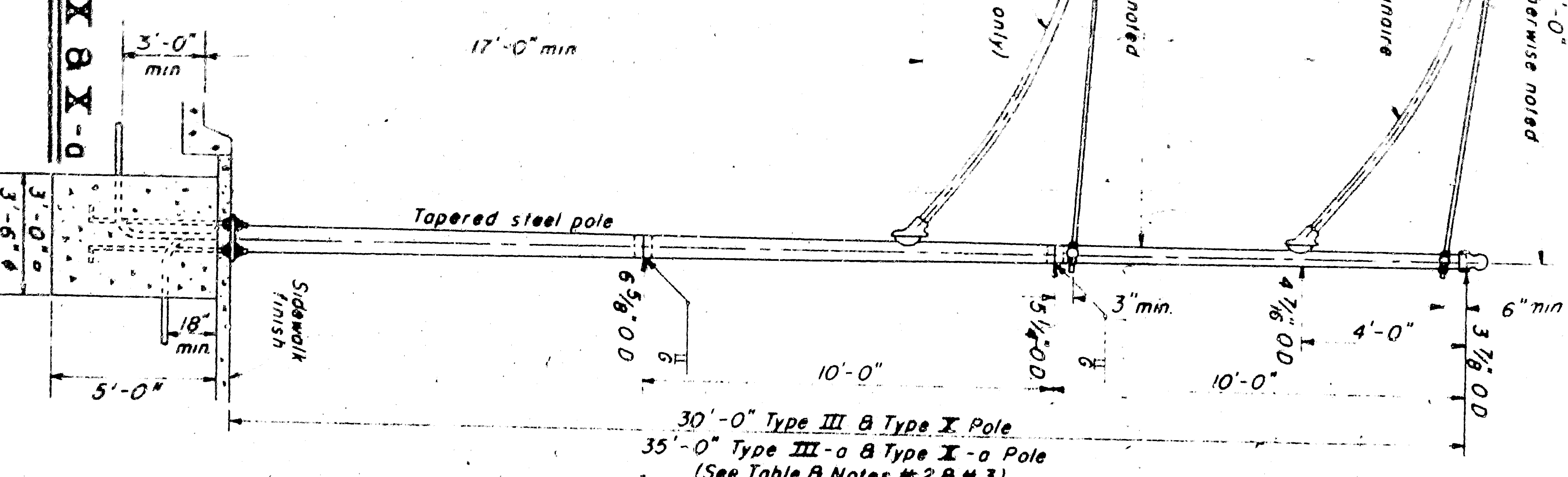
**POLE BASE**



**GROUT DETAIL**

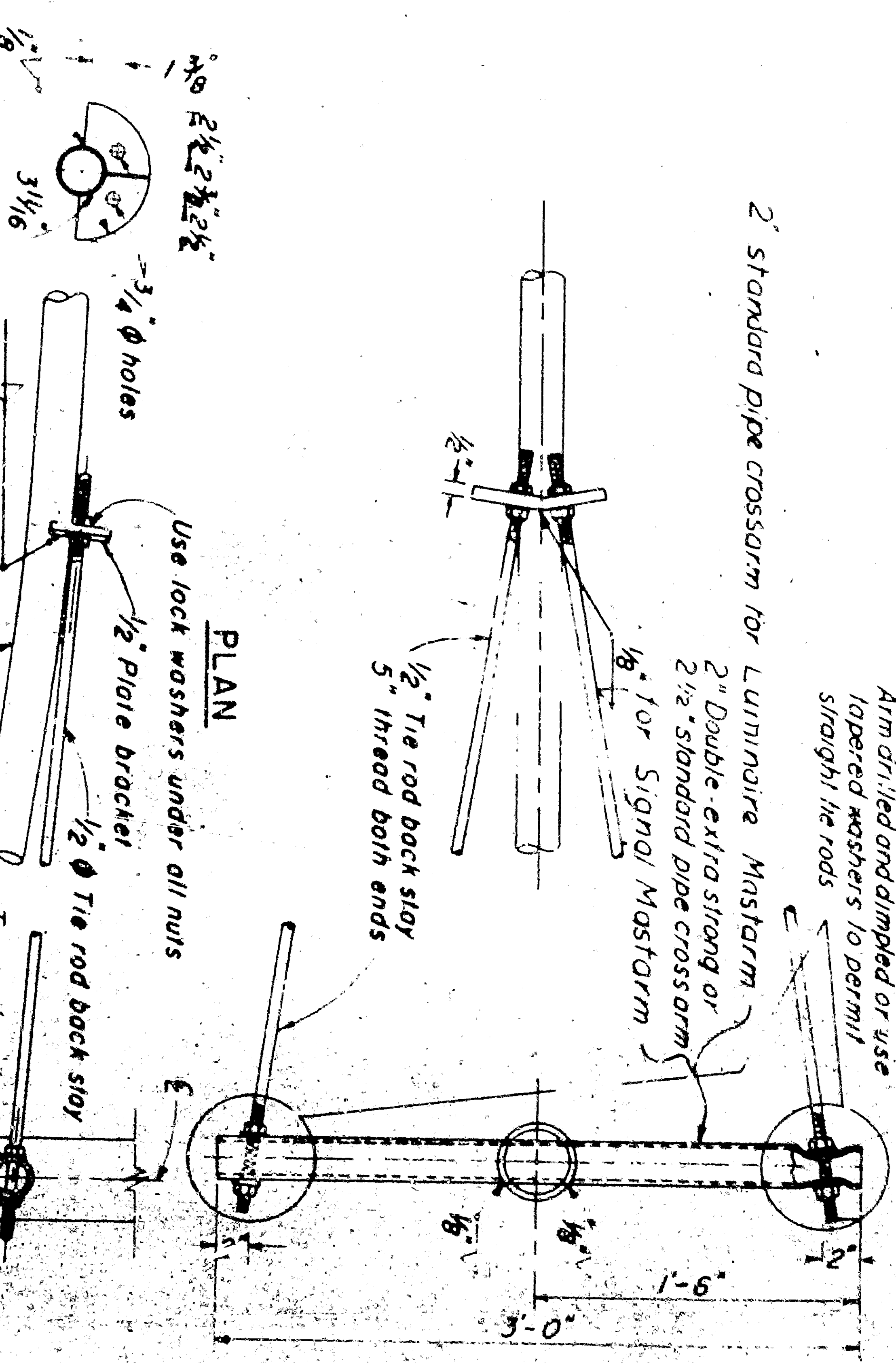
**TYPE III & III-a OR TYPE X & X-a**

ELEVATION (TYPE III SHOWN)  
SCALE: 3/8" = 1'-0"



**MAST ARM TIE RODS AND CROSS ARM**

(Use for mast arms in excess of 8' in length)



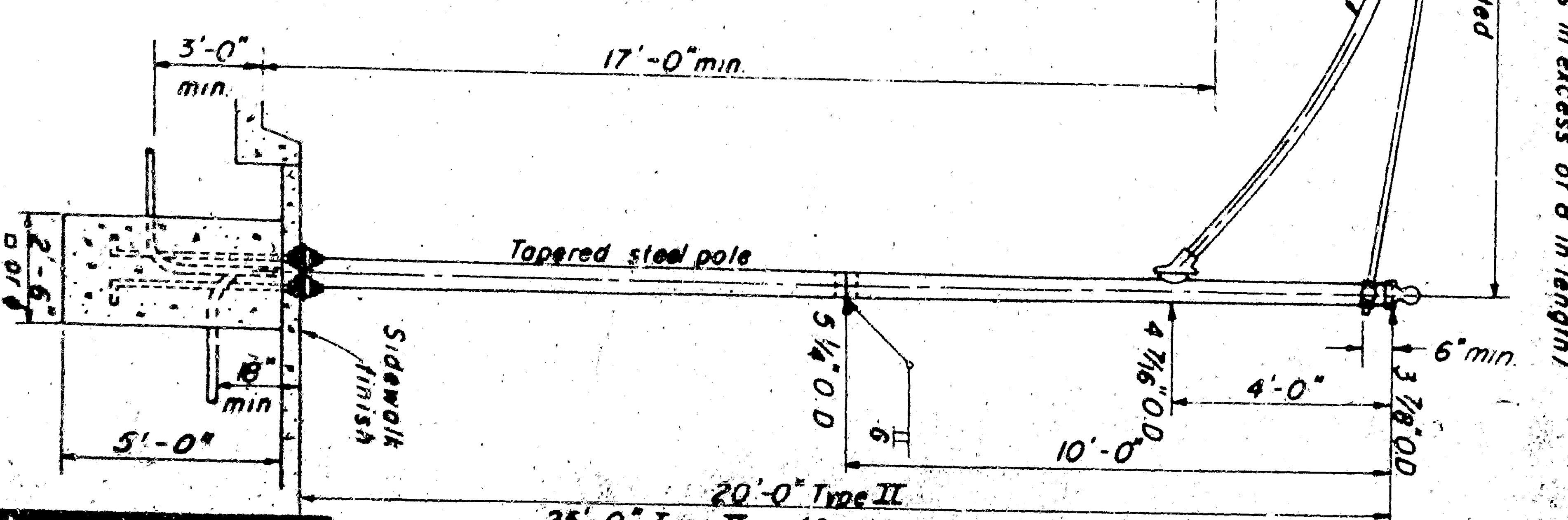
**CALIF - TYPE STANDARDS**

**GENERAL AND INSTALLATION NOTES**

- Anchor bolts and mast arms shall be galvanized. Bolt/nuts, washers and tie rods shall be galvanized or cadmium plated.
  - The lower 5' length of a 25' Type III-a pole shall consist of a 5' x 1/2" gauge tapered section (8'-0" to 8'-11/16" O.D.) butt welded to the lower end of a 30' Type III pole.
  - The lower 5' length of a 25' Type II-a pole shall consist of a 5' x 1/2" gauge tapered section (8'-0" to 8'-11/16" O.D.) butt welded to the lower end of a 20' Type II pole.
  - Luminaire mast arms shall be so curved that mast arms fastened to pole line luminaire pole shall not be below top of pole or more than 1'-6" above.
- MAST ARMS**
- The last 3' of the mast arm shall be straight and shall be horizontal with luminaire or traffic signal attached.
  - Connection between mast arm and pole shall be made by means of a girth ring, section of a mast arm and permitting simple removal of the mast arm and replacing a changed driver for distributed conductors.
- ANCHOR BOLTS**
- Each standard shall be supplied with 4 anchor bolts.
  - Each anchor bolt shall be provided with 6' of galvanized pipe and two nuts and washers. Washers shall be 5/16" x 2 1/2" O.D. standards.
  - Threads may be cut or rolled. Bolts shall be galvanized or plated after threads are turned.

**TYPE II & II-a**

ELEVATION (TYPE II SHOWN)  
SCALE: 3/8" = 1'-0"



STATE OF CALIFORNIA  
DEPARTMENT OF HIGHWAYS  
DIVISION OF HIGHWAYS

**STANDARDS**  
CALIFORNIA TYPE  
2011, 2511, 3011, 3511, 4011 Heights

SCALE AS NOTED